

DMC

GABBIANI  
MACCHINE

IDM

MAHROS

MORBIDELLI

ROUTECH

scmi

STEFANI



### MODEL K 1000ER SINGLE SIDED EDGE BANDER

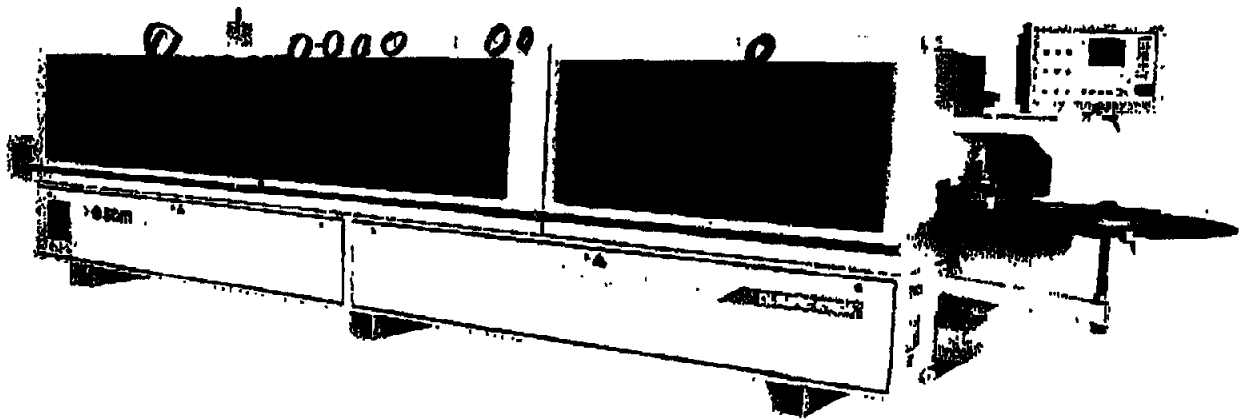


Photo shown may include optional equipment

*15-12-09* *10-12-2009*

**scm e group**  
USA

more than a machine...it's a solution.

Automatic single sided edgebander designed to be used for edgebanding straight vertical profiles with coiled material (veneer and PVC) and with strips (high-pressure laminate and solid wood) with a maximum thickness of 12mm.

### MACHINE BASE

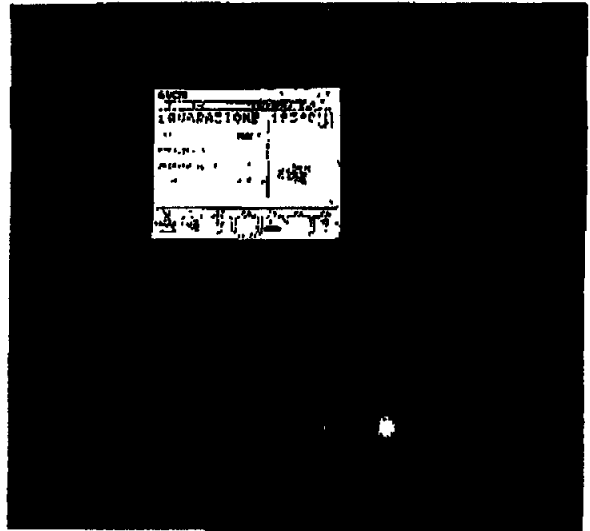
The machine base is a rigid, ribbed steel structure and is designed to provide maximum support for the working units. The ribs provide stability and, at the same time, provide openings in the base to facilitate removal of the chips/dust.

### CAPACITIES AND SPEED

- Edgebanding thickness: .4mm - 12mm (.016-1/2")
- Guillotine capacity: 3mm
- Feed speed: 40/60 ft/min.
- Panel height: 3/8" min - 2 3/8" max
- Minimum panel length: 5 1/2"
- Minimum panel width: 2"
- Minimum distance between panels: 20"

### GRAPHIC CONTROLLER

The Orion 200 Graphic Controller eliminates all micro-switches and controls the activation of all working units. It is equipped with a graphic display that highlights the individual workstations. It is capable of storing 100 programs. The controller performs diagnostic functions to alert the operator of potential problems and reminds the operator when it is time to perform routine maintenance. It also records statistical data such as the number of pieces processed and the amount of banding applied. The control panel swivels 270 degrees for operator convenience.



### ELECTRONIC POSITIONING OF THE TOP PRESSURE BEAM

All operating units raise and lower simultaneously when the pressure beam is adjusted. No adjustment is required for the glue roller when changing panel thickness. The pressure beam has two rows of staggered pressure rollers with steel bearings. The height of the pressure beam is electronically programmable through the controller.

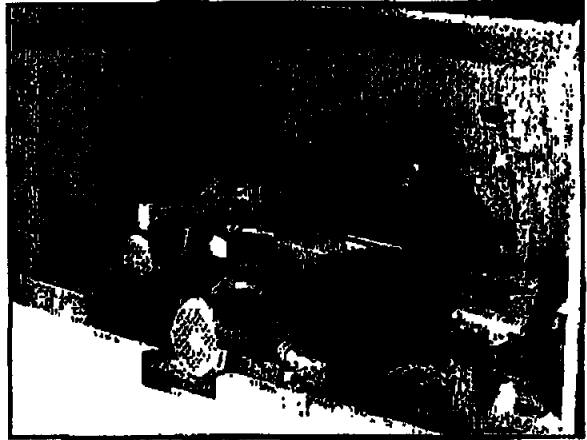
*[Handwritten signature]*  
15-12-09

*[Handwritten signature]*  
10-12-2009

**scmi**  
K 1000ER  
Page 2 of 10

**"VC/500" GLUE STATION**

Teflon coated glue pot to facilitate glue changeover. Warm up time is approximately eight to ten minutes. Reversible Glue Roller to improve the bond on solid wood edges. The unit is also equipped with a quick disconnect plug for changing from one pot to another, change out time is less than a minute. An automatic temperature kickdown feature extends glue life and reduces glue scorching.

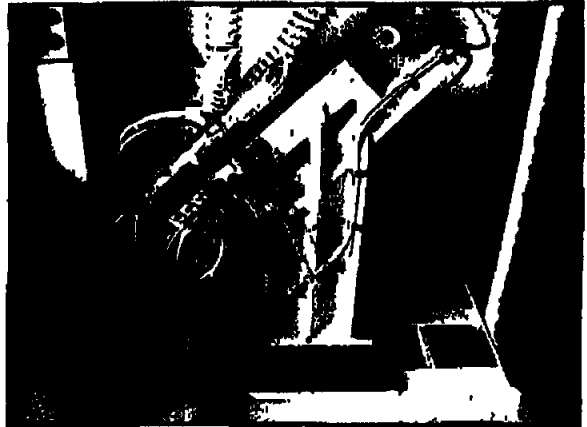


**PRESSURE SECTION**

There are a total of four pressure rollers for pressing the banding to the workpiece edge. The first roller is powered and applies pressure pneumatically. It is also Teflon coated to prevent the banding material from alipping. The three idle rollers have opposing one-degree tilt to provide extra pressure along the top and bottom edge. These rollers also have independent pneumatic adjustment. The machine comes standard with an automatic strip magazine. The rollers have timed jumping action activated by the controller.

**"K-SEL" END TRIMMING STATION**

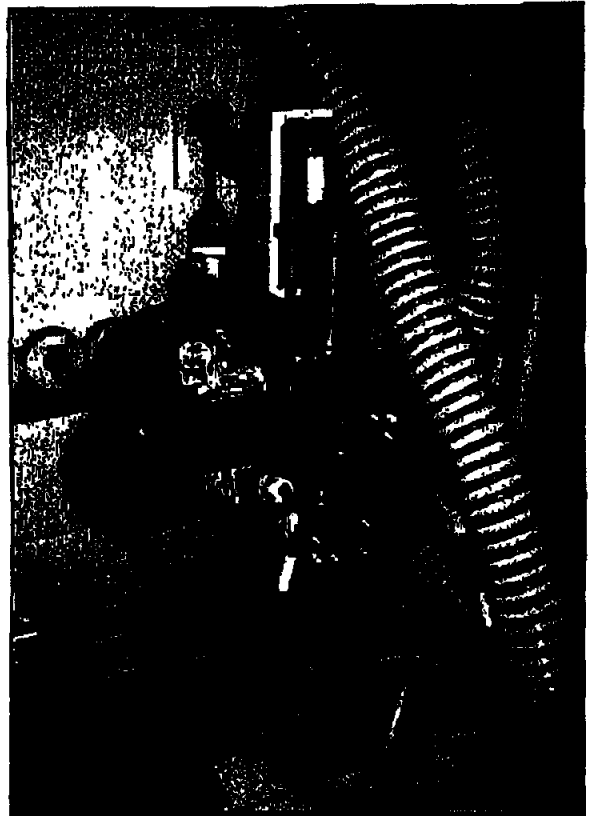
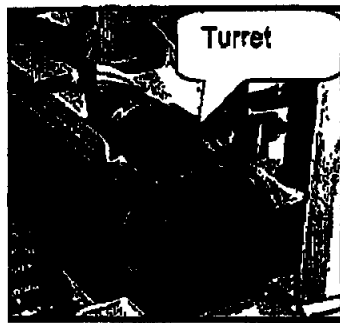
This unit is composed of two independent .50 hp motors mounted on THK guides. End trim utilizes a draw cut system for reduced blade projection on thick panels. The unit comes standard with automatic tilting of the unit from the control panel with two preset positions.



*[Handwritten signature]*  
15/12/09  
*[Handwritten signature]*  
10-12-2009

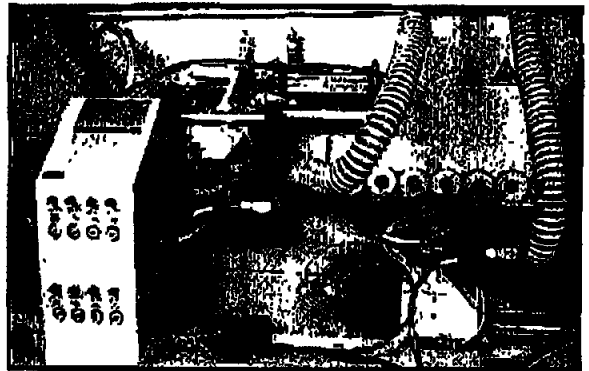
**"RI-1000" EDGE TRIMMING STATION:**

Two independent .8 hp motors operating at 12,000 rpm. The units are tiltable from 0-25 degrees. Large diameter vertical and horizontal copying wheels with digital indicators. Motors have quick release plugs to facilitate tooling changes. It is also equipped with a 4-position adjustable turret for the positioning of the motor. As standard equipment, the unit has pneumatic positioning and quick release motors to facilitate tool changes.



**"ROUND-K" CORNER ROUNDING UNIT:**

Two independent .80hp motors that slide on THK guides ensuring the highest quality finish. Unit is designed to work as an additional set of trimmers for rounding the top/bottom as well as the front/rear corners of work piece with 3mm PVC edges. The unit is equipped with front and lateral copying devices and pneumatic blowers to clean the panel. Dust shrouds surround the cutter and travel with the unit as it trims. The unit can go from thin tape to 3mm PVC, through the controller, with no manual adjustments by the operator.



*15-12-09*

*10-12-2009*

**"RAS/1000" PROFILE SCRAPING STATION and "RCL" GLUE SCRAPING STATION**

The profile scraping station designed to remove knife marks from thick PVC. The unit is equipped with pneumatic in/out positioning through the controller. It has a large diameter horizontal copy wheel and side copy wheel device with digital indicators. It features a quick knife replacement system and comes with both 2mm and 3mm knives. The unit is also equipped with dust extraction.

The glue scraping unit is for the finishing of thin PVC. It is equipped with two throwaway knives, vertical rotating copiers and blowers for tool cleaning. The unit is equipped with on/off pneumatic exclusion.



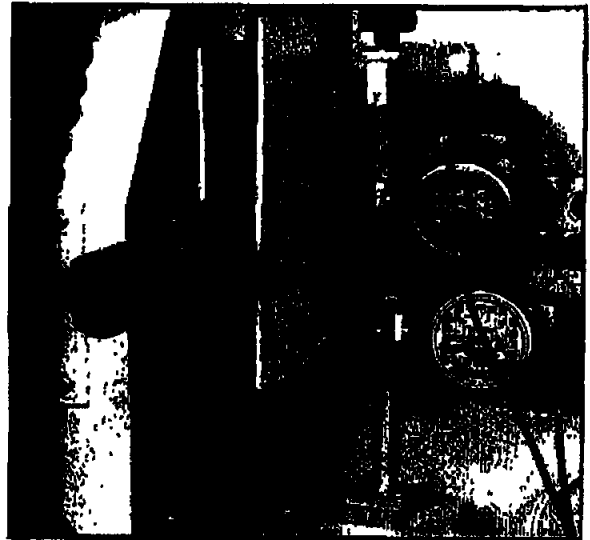
**"SPN" BUFFING UNIT and HOT AIR BLOWER**

The buffing unit has two .25 hp motors. The unit cleans and polishes the panel edge. The unit oscillates to utilize the full width of the wheel and prevent rounding of the panel's leading edge.

The hot air blower is designed to brighten the edges of thick PVC that can sometimes discolor during the machining process. The unit consists of a single hot air blower with adjustable heat range and a directional heat shield for coverage from the top to the bottom edge.

**ACOUSTICAL SAFETY ENCLOSURE**

All working units are enclosed under an acoustical safety hood that is insulated to help reduce noise and prevent accidents. The hood has a safety microswitch which prevents the machine from operating when the hood is open. The machine has a decibel rating of 86db when operating.



**DUST EXTRACTION**

Working units are individually ported on the top of the safety enclosure. There are up to ten individual 120mm (5") openings for extraction.

15-12-09  
\$

10-12-2009

**TECHNICAL SPECIFICATIONS**

<b>Glue Pot Unit:</b>	
Heating Time	Approx. 8-10 min.
Glue Capacity	3.3 lbs.
<b>End Cutting Trimming Station:</b>	
Horsepower	.60 HP ea.
RPM	12,000 RPM
Tilting	0-15 degrees
Blade Diameter/Bore	100mm/32mm
<b>Tiltable Edge Trimming Unit:</b>	
Horsepower	.80 HP ea.
RPM	12,000 RPM
Tilting	0-15 degrees
Cutting Tools	70x20x16mm 3mm radius knives
<b>Corner Rounding Unit:</b>	
Horsepower	.80 HP ea.
RPM	12,000 RPM
Cutting Tools	3mm inserts
<b>Scraping Unit:</b>	
Knife Radius	2mm and 3mm inserts
<b>Buffing Unit:</b>	
Horsepower	.25 HP
RPM	3,000 RPM
Diameter/Bore	152mm/17mm
Feed Motor Horsepower	2.5 HP
Feed Speed	12-18m/min (40 / 60 FPM)
Frequency Converter	200 Hz
Pneumatic Operating Pressure	90 PSI

[REDACTED]

[REDACTED]

[REDACTED]

[REDACTED]

[REDACTED]

[REDACTED]

[REDACTED]

[REDACTED]

15-12-09

10-12-2009